

HOISTWAY
Elevating Expectations

INTERIOR MATERIALS
2018



Operating Panels

Future Trend Series

Surface Mounted COP's, LOP's & Buttons

FTC Black



Future Trend
Cabin Operating
Panel FTC (Black)

Dimension: (W) 162 mm x (D) 30 mm x (H) 1001 mm

**FTL 101
Black**



**FTL 002
Black**



**FTL 001
Black**



Future Trend
Surface Mounted
LOP's FTL (Black)

Dimension: (W) 106 mm x (D) 25 mm x (H) 250 mm

**FTL 101
Stainless Steel**



**FTL 002
Stainless Steel**



**FTL 001
Stainless Steel**



Future Trend
Surface Mounted
LOP's FTL
(Stainless Steel)

Dimension: (W) 106 mm x (D) 25 mm x (H) 250 mm

FTHL Black



Future Trend
Surface Mounted
Indicator FTHL
(Black)

Dimension: (W) 250 mm x (D) 25 mm x (H) 106 mm

FTB



Future Trend
Button FTB

Dimension: (W) 33 mm x (H) 50 mm

FTHL Stainless steel



Future Trend
Surface Mounted
Indicator FTHL
(Stainless Steel)

Dimension: (W) 250 mm x (D) 25 mm x (H) 106 mm

Interior Materials

Car Operating Panels

Horizontal COP's

FPY-1000 BLUE LINE



(W) 1050 mm x (D) 65 mm x (H) 150 mm

FPY 1000 LiSA



(W) 1050 mm x (D) 131 mm x (H) 157 mm

FPY 1000 SL



(W) 1050 mm x (D) 131 mm x (H) 157 mm

Satin or mirror Stainless Steel faceplates
Special Stainless Steel faceplates available upon request

Surface Mounted COP's

**AKC-SM-BA
BLUE LINE XX***



(W) 225 mm x (D) 35 mm x (H) 1100 mm

**AKC-SM-BA XX*
Ucontrol Full Height**



(W) 225 mm x (D) 35 mm x (H) 2000 mm

Surface mounted KLEEMANN COP's, standard type or customised to the car specific dimensions

Available with any type of push button or floor position indicator (display)

*XX: the number of push buttons recesses
Dimension: (W) Width x (D) Depth x (H) Height

Interior Materials

Landing Operating Panels

AKL Flush Mounted LOP's

AKL 005



(W) 85 mm x (H) 230 mm

AKL 102



AKL 103



AKL 003



AKL 101



(W) 85 mm x (H) 180 mm

AKL 055



(W) 150 mm x (H) 285 mm

AKL 057



AKL 241



(W) 210 mm x (H) 250 mm

AKL 242



AKL 001



AKL 002



(W) 85 mm x (H) 180 mm

Interior Materials

Push Buttons & Indicators

Push Buttons

MT42



(W) 39 mm x (H) 39 mm

FTB



(W) 33 mm x (H) 50 mm

BLUE LINE

KLH42R



ø 41 mm

KLH42Q



(W) 35 mm x (H) 35 mm

RT42



(W) 30 mm x (H) 30 mm

BA54K



(W) 48 mm x (H) 38 mm

In compliance with EN 81.70

Surface Mounted Indicators

WPY910VL



(W) 200 mm x (D) 117 mm x (H) 175 mm

With
Inclined
Faceplate

SM910VL



(W) 200 mm x (D) 40 mm x (H) 135 mm

SM908SA



(W) 145 mm x (D) 20 mm x (H) 90 mm

Flush Mounted Indicator

P95-902 Ucontrol



(W) 230 mm x (D) 20 mm x (H) 92 mm

P95-902 LiSA



P95-902 LCD/TFT Ucontrol



Interior Materials

Car & Landing Operating Panels Set

Touch-sensitive Glass Panels

TSC
White Glass LiSA



Dimension:
(W) 185 mm x (D) 35 mm x (H) 930 mm

TSL 002
White Glass LiSA



Dimension:
(W) 80 mm x (D) 35 mm x (H) 288 mm

TSC
Blue Glass LiSA



Dimension:
(W) 185 mm x (D) 35 mm x (H) 930 mm

TSL 002
Blue Glass LiSA



Dimension:
(W) 80 mm x (D) 35 mm x (H) 288 mm

TSC
Black Glass LiSA



Dimension:
(W) 250 mm x (D) 55 mm x (H) 2245 mm

TSL 002
Black Glass LiSA



Dimension:
(W) 80 mm x (D) 35 mm x (H) 330 mm

TSC
Black Glass Ucontrol



Dimension:
(W) 235 mm x (D) 75 mm x (H) 1600 mm

TSL 102
Black Glass Ucontrol



Dimension:
(W) 115 mm x (D) 16 mm x (H) 330 mm

Interior Materials

Handrails

K2



Available materials: Stainless steel Mirror
Satin, Gold, Bronze (upon request)

K3



Available materials: Stainless steel Mirror

K6



Available materials: Stainless steel Mirror

Ceilings

O3



Available materials:
Stainless steel Satin, Mirror,
Checks, Gold Satin, B/A Linen,
12LG

O7



Available materials:
Stainless steel Satin, Mirror,
Checks, Gold Satin, B/A Linen,
12LG

O10



Available materials:
Stainless steel Satin, Mirror,
Checks, Gold Satin, B/A Linen,
12LG

O14



Available materials:
Stainless steel Satin, Mirror,
Checks, Gold Satin, B/A Linen,
12LG

O15



Available materials:
Stainless steel Satin, Mirror,
Checks, Gold Satin, B/A Linen,
12LG

O55



Available materials:
Stainless steel Satin, Mirror,
Checks, Gold Satin, B/A Linen,
12LG

Interior Materials

Walls

HP Laminates



DU 1715VV



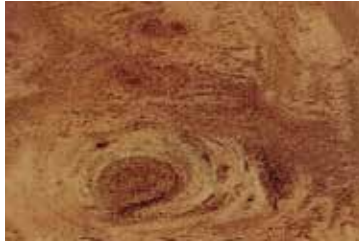
DU 6254 HG



MT 2042 G



AB 659



AB 1306 HG



HD 2982 HG



AB 383



HD 2307 PL



HD 2228 PL



DU 8110



HD 2416 PL



DU 5410 HG

Interior Materials

Walls

Stainless Steel



Satin



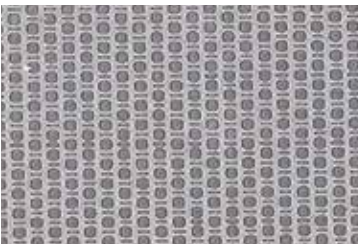
Checks



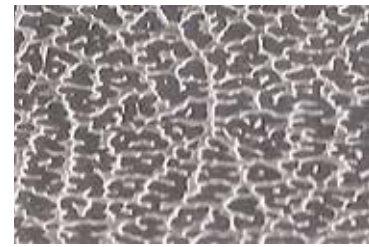
Mirror



Gold Satin



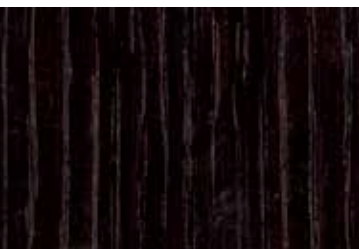
B/A Linen



12LG

Contact your sales engineer for more special stainless steel options

Wooden



IVE 14



VC 1181



VC 1184



VC 1190

Interior Materials

Walls

Glass



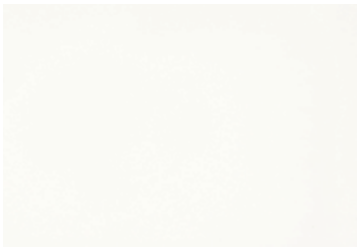
Y8W Yellow Mat



K16 Orange Mat



R3W Red Mat



B123W White Glass



YB9W Green

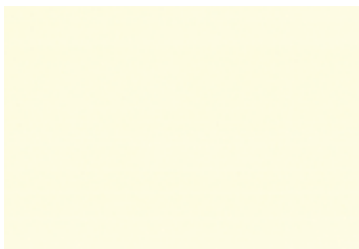


B14W Blue

09
10

KLEEMANN INTERIOR MATERIALS 2018

Skinplates



A90 GTA



PPS F12



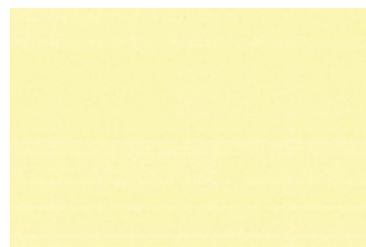
PPS 13



PPS 93



B13



A67SMA

Interior Materials

Walls

Artificial Leather



Madeira 4411



Saronno S-7015



Saronno S-7005



Pelle Sintetica S-4604



Bowling 7004

Special Melamine Panels



144



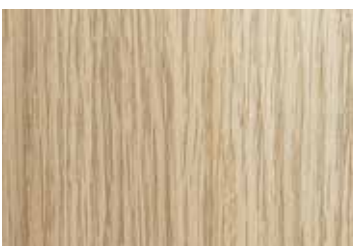
142



147



145



A 402



A 378

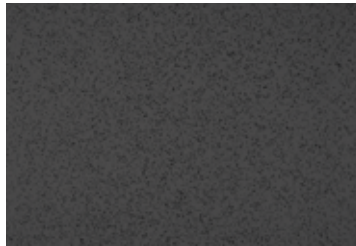
Interior Materials

Floors

Rubber Floors



Black 6801



Griffon 6768



Linoleum 6674



Anthracite 6727



MX19101



Linoleum 6603



Linoleum 6602

Ceramic Tiles



GP5 Nero



GP 10



Greek Pentelikon



Ceramic Cream



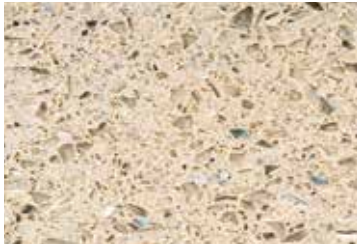
Nero Markuinia

Please contact your sales engineer for materials' compatibility restrictions.

Interior Materials

Floors

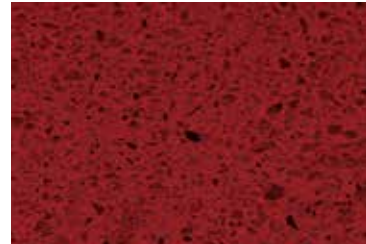
Artificial Granites



Regal Beige



Regal White



Regal Red



Regal Black

Floor Laminate



8096



8630

Bumper Rails



Stainless Steel Satin



Plastic

Interior Materials

KLEEMANN also offers
you the opportunity
to supply your own
floor and wall
tillings in case
you need something
else than our variety
of materials.

Please contact us for
more options!






kleemannlifts.com

www.designyourlift.com

Colours may differ slightly from those shown in the brochure, owing to the limitations of the printing process.

While every effort has been made to ensure information accuracy, KLEEMANN bears no responsibility for typographic errors or omissions.

Copyright © KLEEMANN 2018

